

ACCESSORIES

REEL-ALKP38100

360 DEGREE PIVOT HOSE REEL



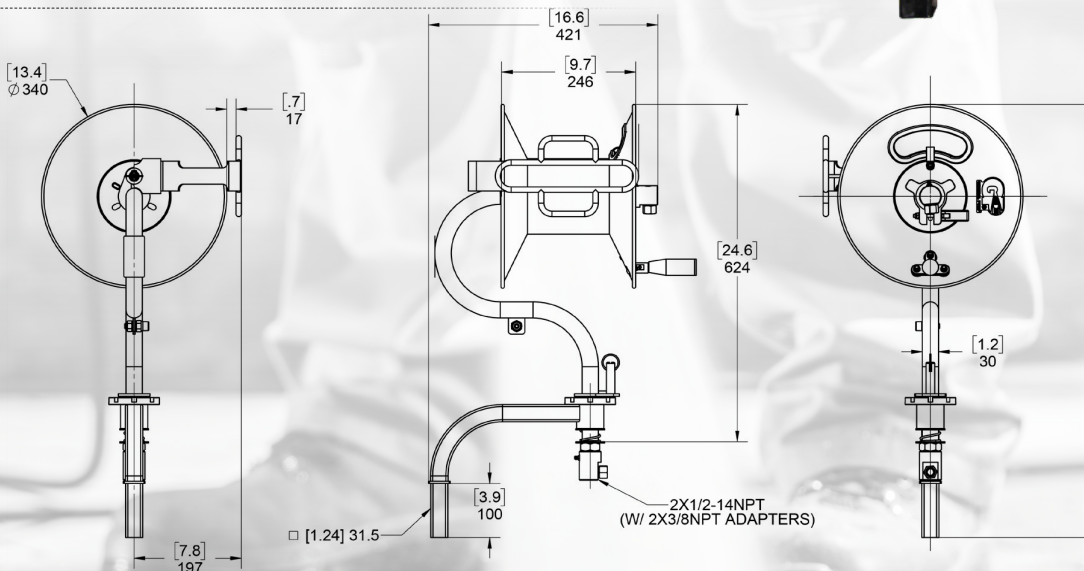
SPECIFICATION

- 100 ft 3/8" Hose Capacity
- 1/2 NPT - F Inlet/Outlet Includes (2) 3/8" reducer fittings
- 360° Swivel Rotation
- 5,000 PSI SS Swivel
- 250° F Max Temp

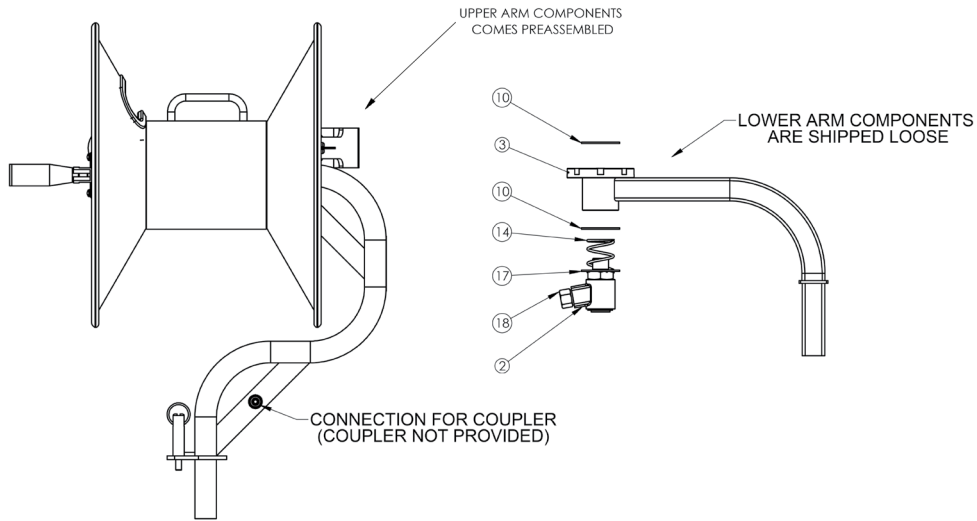
FEATURES / BENEFITS

- Direct hand-crank rewind with lockin pin
- Solid Steel Construction
- Durable powdercoated finish
- 360° swivel rotation
- Robust folding handle
- 180° pivoting hose guide
- Adjustable friction lever brake
- Full Flow high pressure stainless steel swivels
- Coupler connection to secure hose when not in use

DIMENSIONS



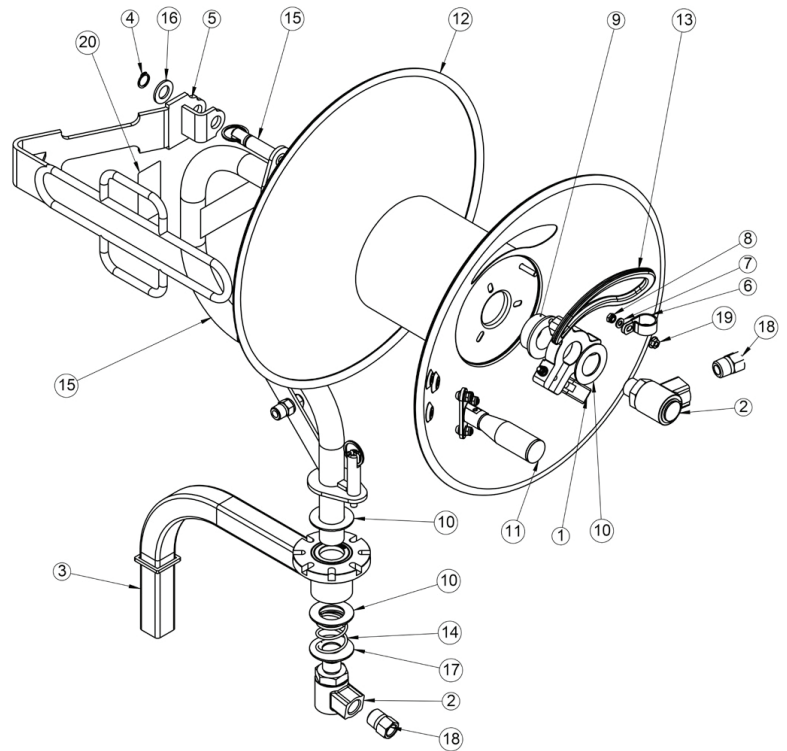
ASSEMBLY INSTRUCTIONS



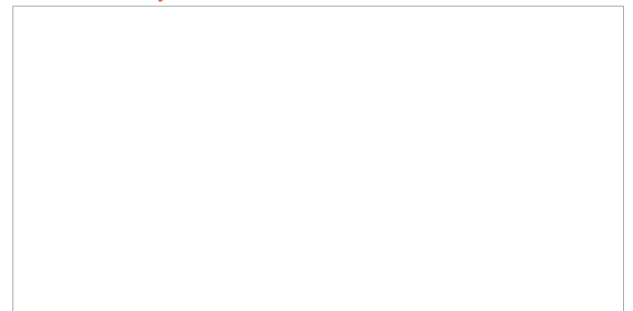
1. Slide washer (item 10) over the shaft of the upper arm assembly.
2. Insert the shaft on the lower arm.
3. Assemble the remaining components with the layout shown. Use thread sealant (not provided) on the inlet threads of the swivel.
4. Attach inlet hose to the swivel on the lower arm assembly.
5. Attach the outlet hose to the swivel on the upper arm assembly then secure to the hose clamp (item 6).
6. Route the opposite end of the hose through the openings in the flange and hose guide.
5. The hose reel is ready for operation.

PARTS LIST

Item No.	Description	Qty.
1	Brake kit, 30mm	1
2	SS Swivel 10° offset, M22X1/2NPT-F, 5000 PSI	2
3	Arm kit, Lower	1
4	SS Snap Ring, 16	1
5	Guide, Hose	1
6	Clamp, Hose	1
7	Washer, M6	2
8	Nut, Nylok, M6	2
9	Bushing	2
10	Washer	4
11	Handle Kit, 30 Degrees	1
12	Assy, Flange	1
13	Guard, Hose	1
14	Spring	1
15	Arm Kit, Upper	1
16	Washer, M16	1
17	Washer, 53X23X2	1
18	Fitting, 1/2 NPT-MX 3/8 NPT-F	2
19	Flange Nut, M6, SS	1
20	1	



Distributed by:



Alkota Cleaning Systems Inc.
Alcester, South Dakota 57001

For more information call:
(800) 255-6823 / (605) 934-2222 or
Fax: (800) 325-5682 / (605) 934-1808
Web Access: www.alkota.com

CERTIFICATIONS



© 2022 Alkota Cleaning Systems
Specifications subject to change without notice
Printed in U.S.A. / Form #:ALK-PREEL38100